

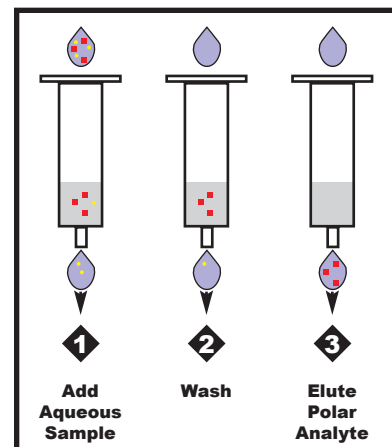
Spe-ed™ Advanta

Isolation of Polar Organics from Aqueous Matrices

Applied Separations, Inc., has developed *Spe-ed Advanta*, a new chemically modified polymeric resin for solid phase extraction (SPE). *Spe-ed Advanta* is packed in standard 1, 3 and 6mL SPE cartridges, and in 96-well plates (other cartridge sizes available upon request) and is effective in removing polar organic compounds from aqueous samples.

Unlike standard C18 and polystyrene divinylbenzene SPE cartridges, *Spe-ed Advanta* is:

- easily wetted with water
- requires no tedious conditioning steps
- eliminates poor recoveries associated with the drying of a conditioned sorbent bed.



Spe-ed Advanta markedly increases the recoveries of polar compounds from aqueous matrices when compared to C18 and polystyrene divinylbenzene SPE cartridges. *Spe-ed Advanta* enhances the preparation of pharmaceutical, environmental, biological, clinical, biotechnical, food and cosmetic samples.

Recoveries of phenols, aromatic compounds and polyhydroxy aromatic compounds by SPE under wet and dry loading conditions.*

Compound	Recovery Percentage					
	C18		DVB**		Advanta	
	Wet	Dry	Wet	Dry	Wet	Dry
Phenol	6	3	91	3	100	93
p-Cresol	16	4	91	12	101	94
p-Ethylphenol	66	15	96	37	101	99
Nitrobenzene	54	27	92	51	100	97
2,4 Dimethylphenol	71	21	95	42	100	98
Aniline	9	<5	94	26	100	96
Benzyl alcohol	10	<5	92	17	99	99
2,4 Dinitrofluorobenzene	44	4	83	23	98	94
Methyhydroquinone	0	0	77	0	99	94

* Recovery data for additional analytes available upon request.

** Polystyrene Divinyl Benzene

Solid Phase
Extraction

Applied
Separations

930 Hamilton St.
Allentown, PA
18101
610.770.0900
610.740.5520 (fax)
spe25 02/04

www.appliedseparations.com

Spe-ed™ Advanta

Standard Spe-ed Advanta

Description	Qty/Box	Catalog Number
30mg/1mL	100	4261
50mg/1mL	100	4262
100mg/1mL	100	4263
100mg/3mL	50	4264
200mg/3mL	50	4265
500mg/6mL	30	4266

Spe-ed Flow Advanta*

Description	Qty/Box	Catalog Number
30mg/1mL	100	4267
50mg/1mL	100	4268
100mg/1mL	100	4269
100mg/3mL	50	4270
200mg/3mL	50	4271
500mg/6mL	30	4272

* *Spe-ed* Flow cartridges are specially designed to allow for the fast, free-flowing direct addition of suspended solid laden samples into an SPE cartridge. Please refer to the *Spe-ed* Flow literature for additional information.

Larger cartridge configurations are available upon request.